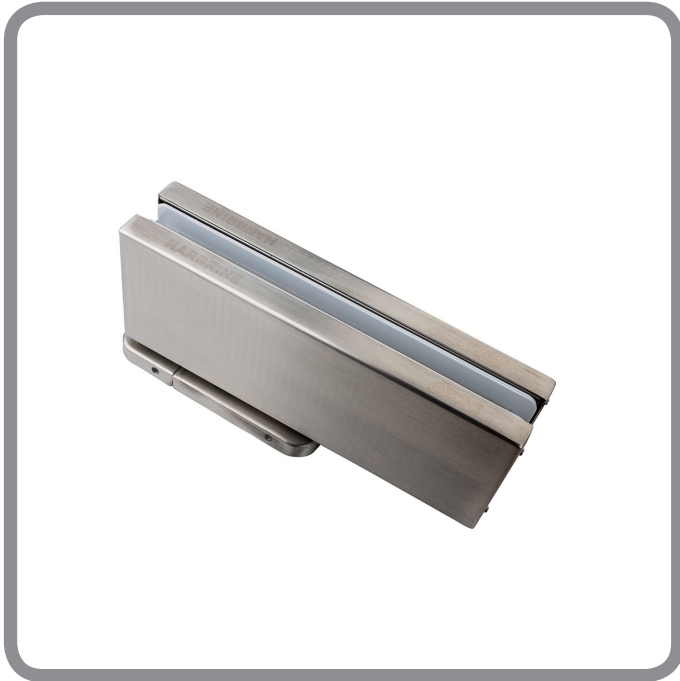


10.094

Hydraulic patch



FINISHES

SSS
PSS

VARIANTS

01 = standard self close
02 = hold open at 90 degrees

UNIT OF MEASUREMENT

Each

DIMENSIONS

68mm height
186mm width

Max door weight 100kg

FEATURES

- ▶ Suitable door width 1000mm
- ▶ For 10mm and 12mm glass
- ▶ 150° angle of opening
- ▶ Adjustable latching and closing speed
- ▶ Easy installation

HARBRINE

ARCHITECTURAL
IRONMONGERY

www.harbrine.co.uk