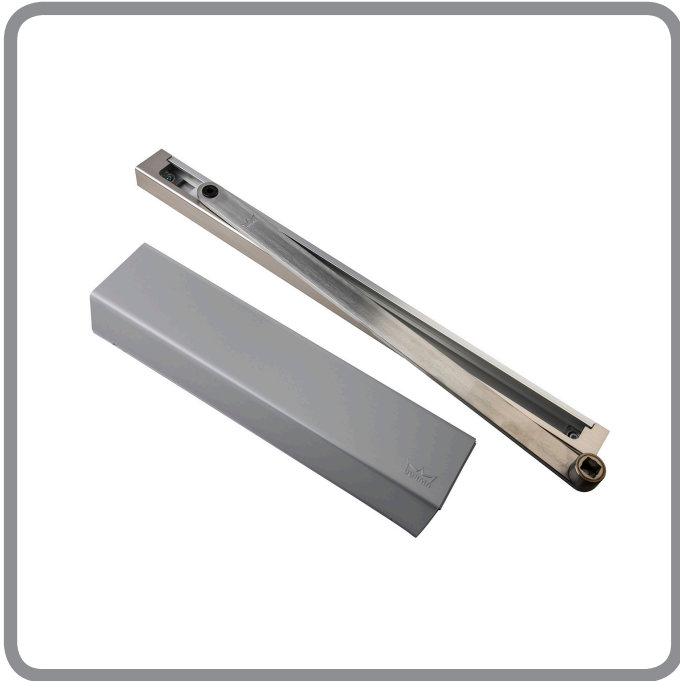


# 2.003

## Cam action door closer



### FINISHES

SSS  
PB  
Silver

Other finishes available upon request

### VARIANTS

01 = standard (type B or G fixing)  
02 = electro-magnetic (type B or G fixing)

### UNIT OF MEASUREMENT

Each

### DIMENSIONS

281mm length  
65mm height  
47mm depth

### FEATURES

- ▶ Third party tested to BS EN 1154 for standard
- ▶ BS EN 1155 for electro-magnetic hold open
- ▶ CE marked
- ▶ Certifire approved CF119

EN 2-4

# HARBRINE

ARCHITECTURAL  
IRONMONGERY

[www.harbrine.co.uk](http://www.harbrine.co.uk)