

1 About this document

1.1 Contents and purpose

This manual enables the safe use of the casting compound.

1.2 Target group

This manual is designed for use by certified assembling technicians.



Note

As of 24 August 2023, employers or self-employed workers must ensure that industrial or commercial users (assembling technicians) have successfully completed training on the safe use of diisocyanates before using the substances(s) or mixtures.

1.3 Hazard categories



DANGER

This signal word indicates a situation of immediate risk, which will lead to death or serious injury if not averted.

2 Safety

2.1 Intended use

The casting compound is used solely for filling the cavity around a floor spring door closer.

2.2 Basic warnings



DANGER



Causes skin irritation.

May cause an allergic skin reaction.

Causes serious eye irritation.

Harmful if inhaled.

May cause allergy or asthma symptoms or breathing difficulties if inhaled.

May cause respiratory irritation.

Suspected of causing cancer

May cause damage to organs through prolonged or repeated exposure.

Improper handling of the casting compound can lead to serious health damage.

- Provide fresh air at the place of use.
- Wear protective gloves/protective clothing/eye protection/face protection.
- Do not inhale dust/fume/gas/mist/vapor/aerosol.
- In the event of inadequate ventilation, wear respiratory protection.
- Store under lock and key.

Component B contains

- Diphenylmethane diisocyanate, isomers and homologues
- 4,4'-Methylenediphenyl diisocyanate
- Diphenylmethane-2,4-diisocyanate
- 2,2'-Methylenediphenyl diisocyanate

2.3 Protective measures

General protection and hygiene measures

- Keep away from food, drink and animal feed.
- Wash hands before breaks and at the end of work.
- Avoid contact with eyes and skin.
- Do not eat, drink, smoke or sniff any substances while working.

Personal protective equipment

- Protective work clothing
- Respiratory protection
Respiratory protection is required at insufficiently ventilated workplaces and during spray application. A fresh air mask or an A2P2 combination filter are recommended for short-term work.
- Gloves
Conditionally suitable materials for protective gloves;
DIN EN ISO 374-1: Nitrile rubber - NBR: Thickness ≥ 0.4 mm
Only suitable as a spray guard. Only suitable for short-term exposure.
Change protective gloves immediately in the event of contamination.
- Tight-fitting safety goggles

2.4 First aid measures

- Remove any clothing contaminated with the product immediately.
- Move affected persons into fresh air.
- **If inhaled**, provide fresh air and seek medical advice as soon as possible.
- **After contact with skin**, wash off immediately with soap and water and rinse thoroughly.
- **If swallowed**, seek medical advice as soon as possible.
- **After contact with eyes**
 1. Rinse opened eye for several minutes under running water.
 2. If possible, remove any contact lenses and rinse further.
 3. Seek medical advice as soon as possible.

3 Product description

The casting compound protects the floor spring door closer from contamination and corrosion.

4 Mounting

The cavity must be clean and dry before being filled with the casting compound.

1. Remove the clips from the cans and open the lids.

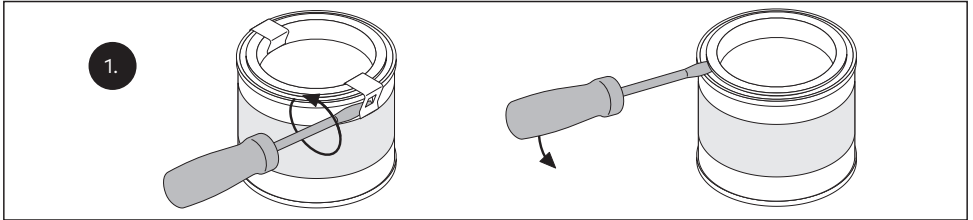


Fig. 1

2. Pour the hardener (can B) into the stock solution (can A) and mix well with each other.



Note

Inadequate mixing can have a detrimental effect on subsequent curing and adhesion.



Note

As curing begins after approx. 20 minutes, the casting compound must be processed immediately after mixing.



Fig. 2

3. Slowly pour the casting compound into the cavity between the cement box and the door closer housing until only the valves and the axle are exposed.
 - ▶ The casting compound is fully cured after approx. 24 hours.

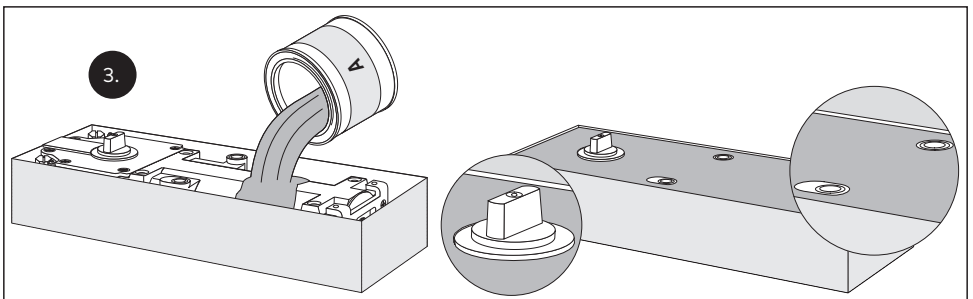


Fig. 3

5 Disposal



The product must be disposed of in an environmentally friendly manner. The product must not be disposed of as domestic waste. The product must not be permitted to enter the sewerage network. Refer to the statutory regulations for your country.

6 Safety data sheets

The safety data sheets of the components can be found here:

[Component A safety data sheet](#)
[German](#)



[Component B safety data sheet](#)
[German](#)



[Component A safety data sheet](#)
[English](#)



[Component B safety data sheet](#)
[English](#)

