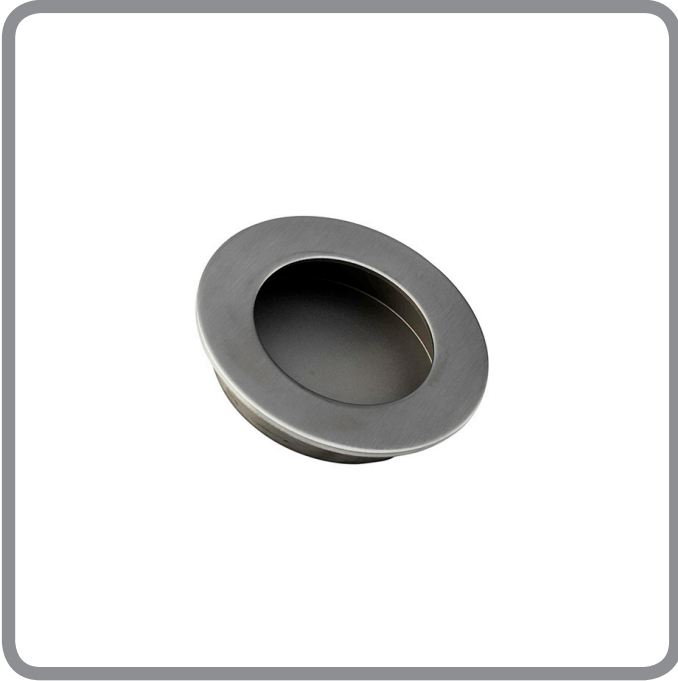


9.085.01

Flush pull



FINISHES

SSS
PSS

VARIANT

01 = round

UNIT OF MEASUREMENT

Each

DIMENSIONS

65mm external diameter

55mm interior diameter

FEATURES

- ▶ Concealed fixing

HARBRINE

ARCHITECTURAL
IRONMONGERY

www.harbrine.co.uk