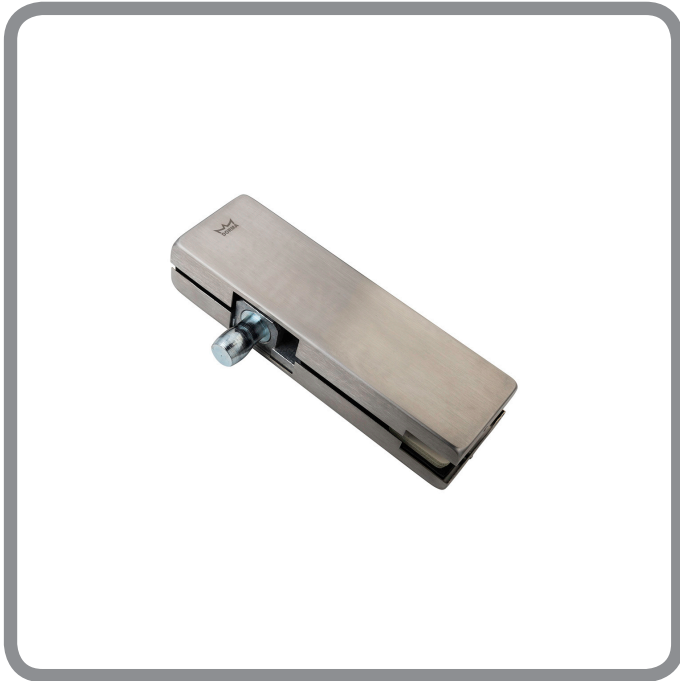


# 10.025

## Over panel patch



### FINISHES

SSS

PSS

Other finishes available upon request

### VARIANTS

01 = with pivot insert

02 = with blank insert

03 = with stop insert

### UNIT OF MEASUREMENT

Each

### DIMENSIONS

164mm length

51mm height

Pivot point variable: 53mm or 63mm

### FEATURES

- ▶ Glass thickness 10mm or 12mm
- ▶ 15mm or 19mm available upon request
- ▶ Not a load bearing fitting